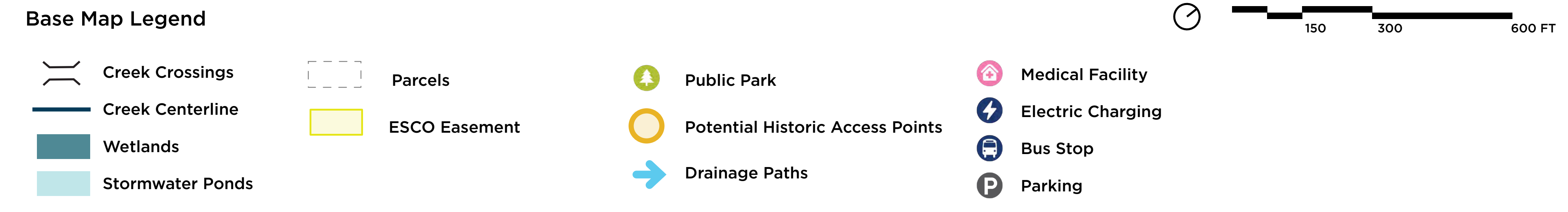
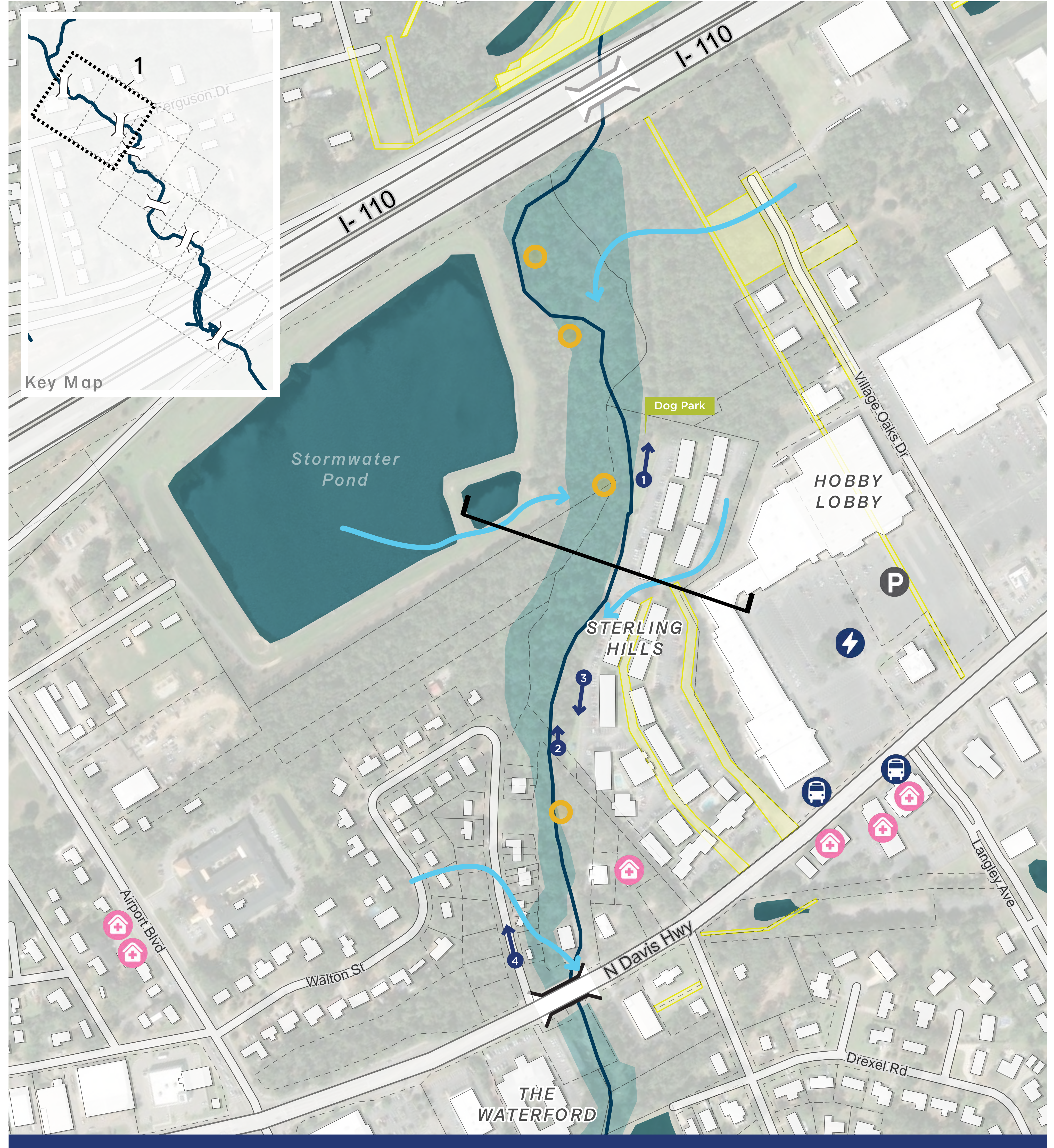
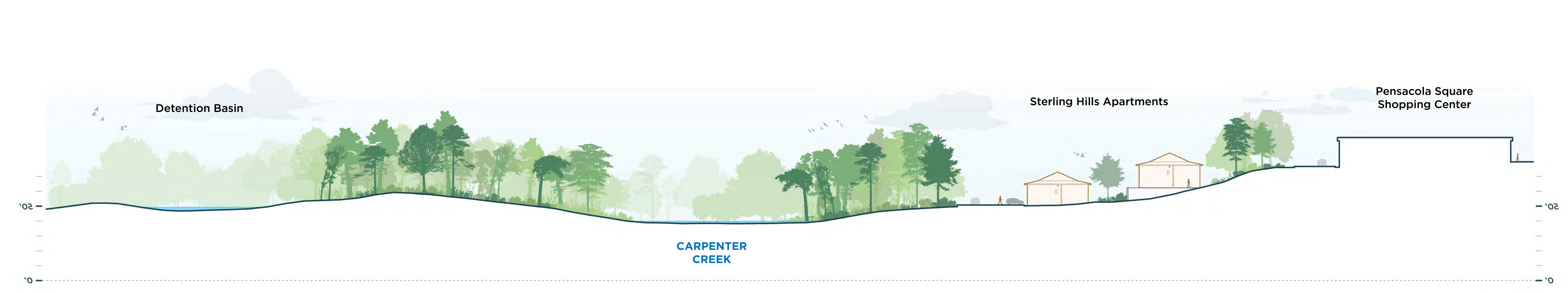


I-110 to Davis Highway

Existing Site Conditions



Cross Section



Site Photos



1 The dog park and parking lot located behind the Sterling Hills Apartments adjacent to Carpenter Creek.



2 Sedimentation and debris in Carpenter Creek smother existing in-stream habitat.

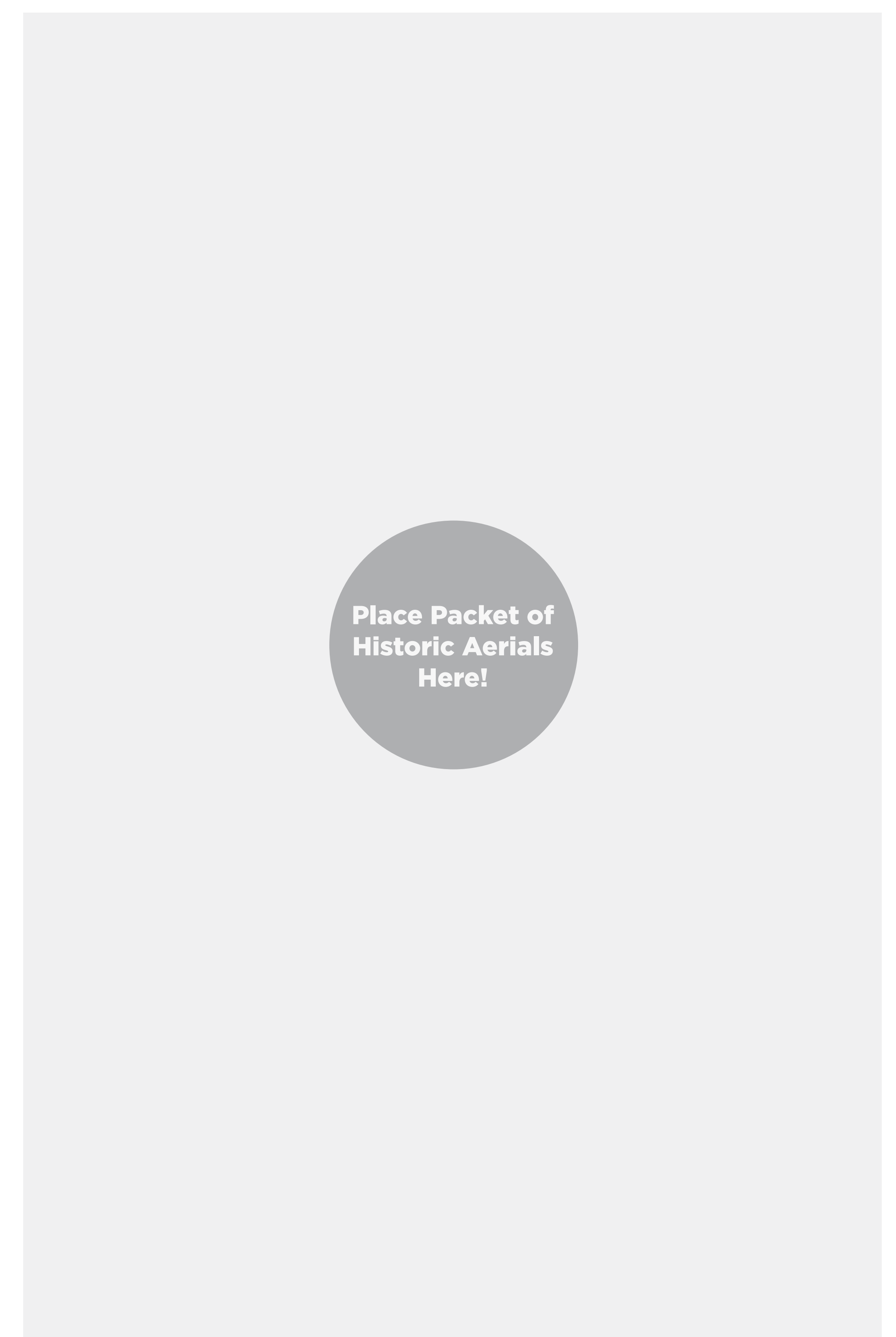


3 The creek behind the Sterling Hills Apartments remains hidden by dense riparian vegetation; water outfalls are directed toward the creek.



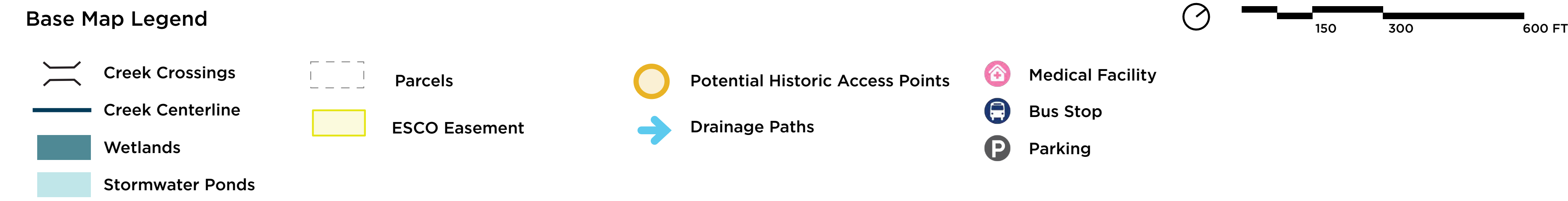
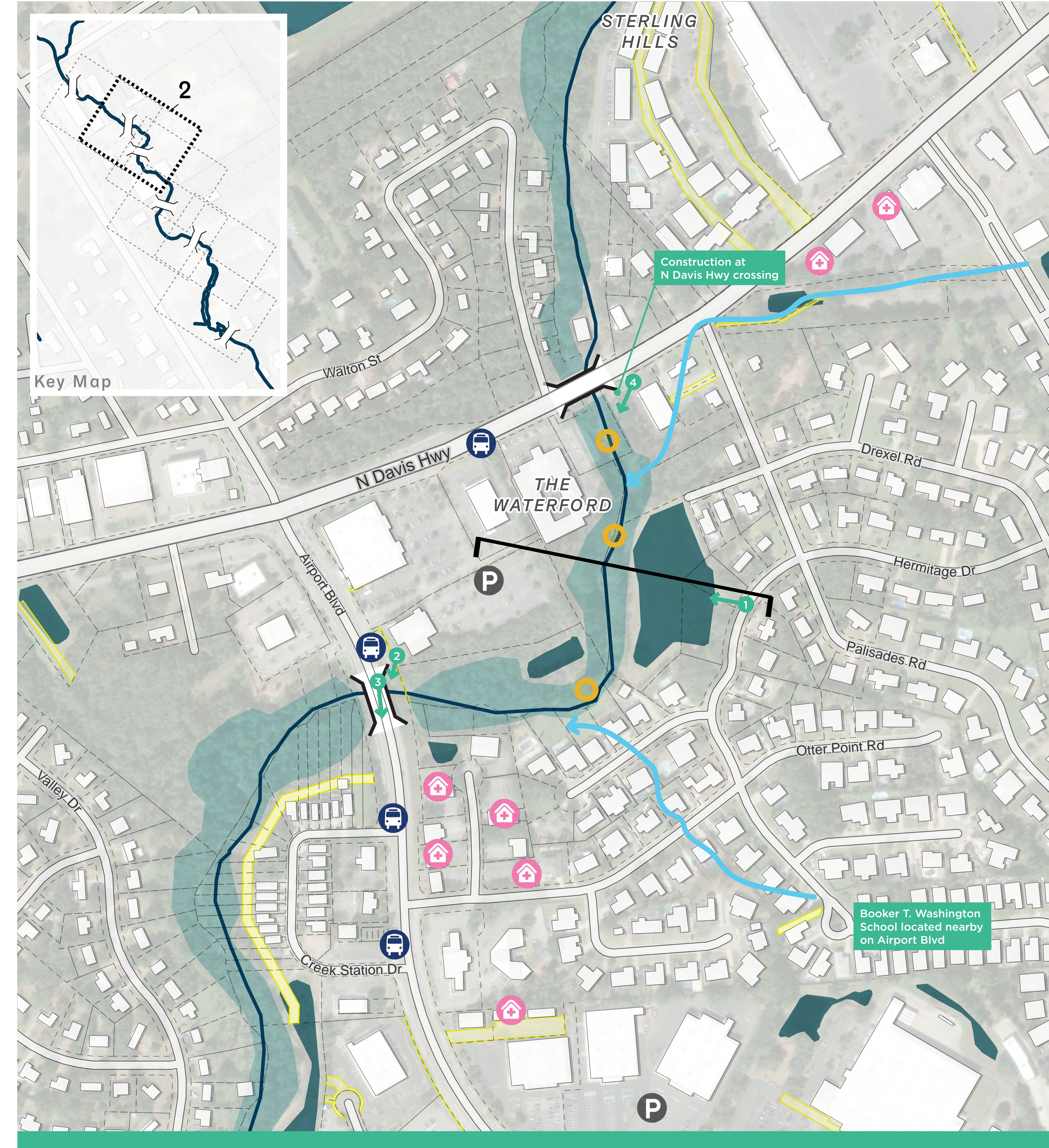
4 Creek-facing homes along Walton St vulnerable to property damage due to erosion and slope bank failure.

Historic Aerials

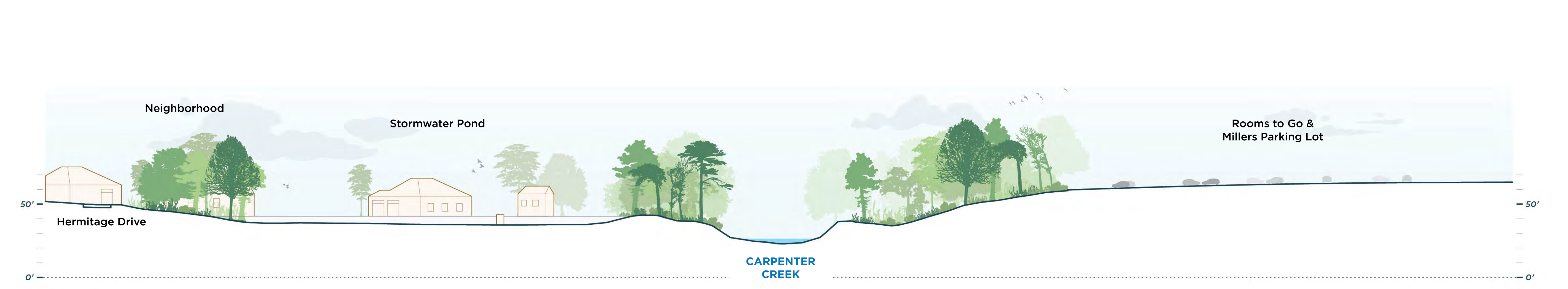


Davis Highway to Airport Boulevard

Existing Site Conditions



Cross Section



Site Photos



1 Stormwater Pond bordering the creek as seen from Hermitage Drive, site of WMP access recommendations.



2 Airport Blvd crossing over Carpenter Creek.

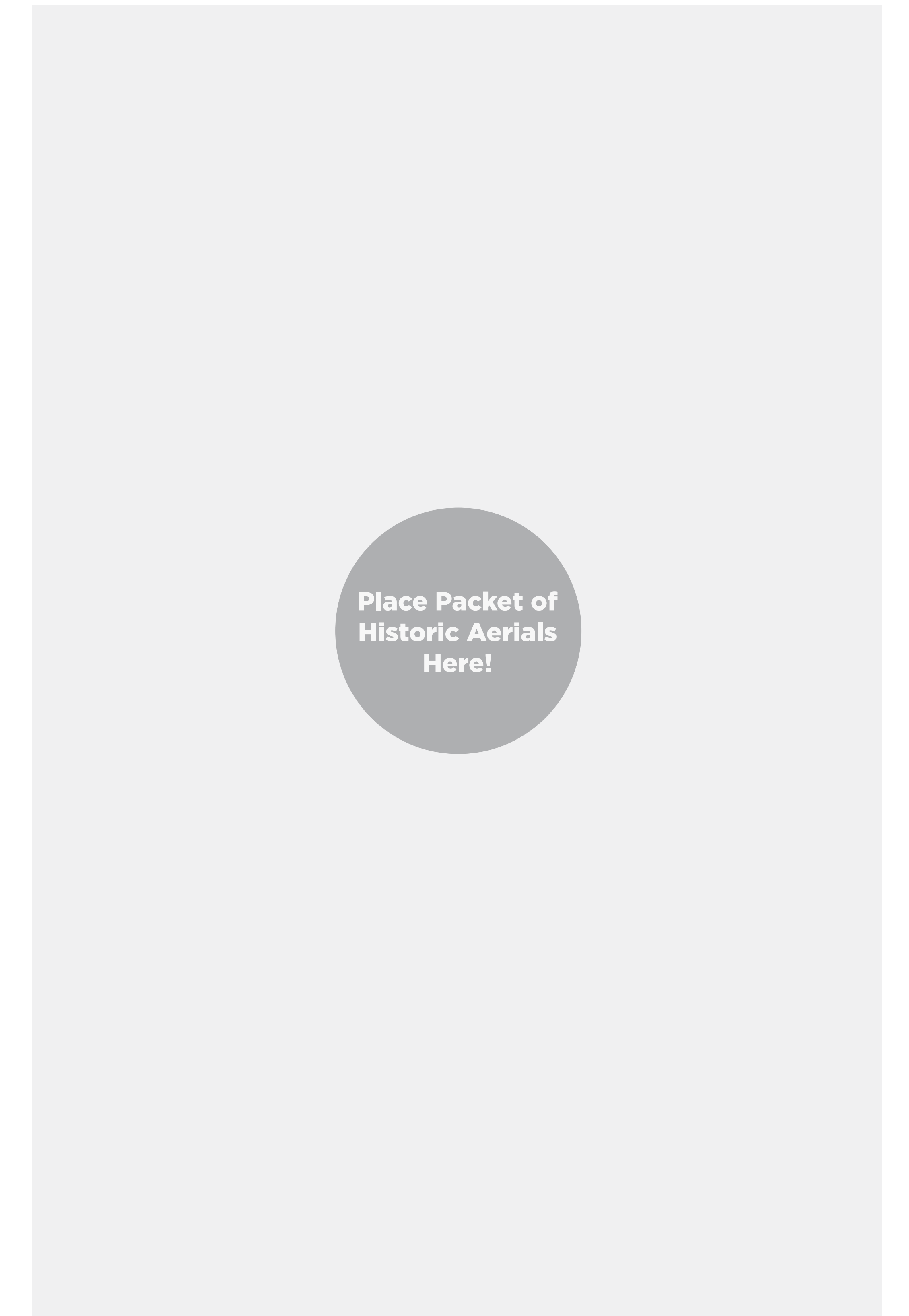


3 Carpenter Creek underneath Airport Blvd bridge, termination of concrete slough alongside crossing. Likely the highest clearance of crossings.



4 The bank stabilization on the east side of the N Davis Hwy crossing actively constrains the creek and leaves no room for its natural processes.

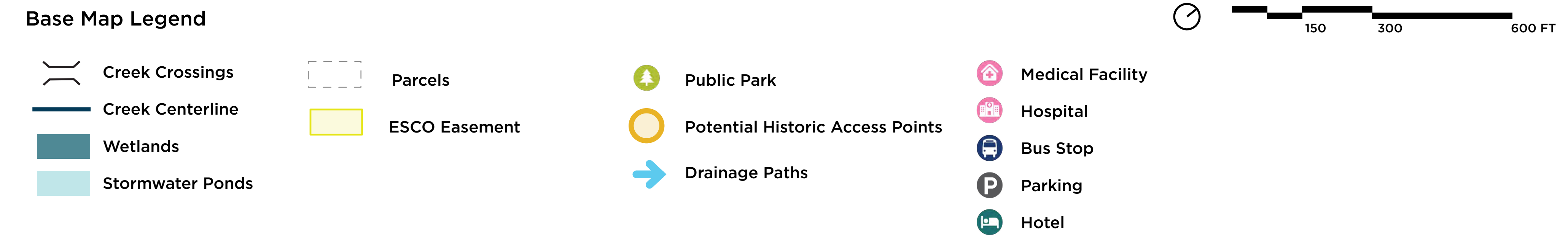
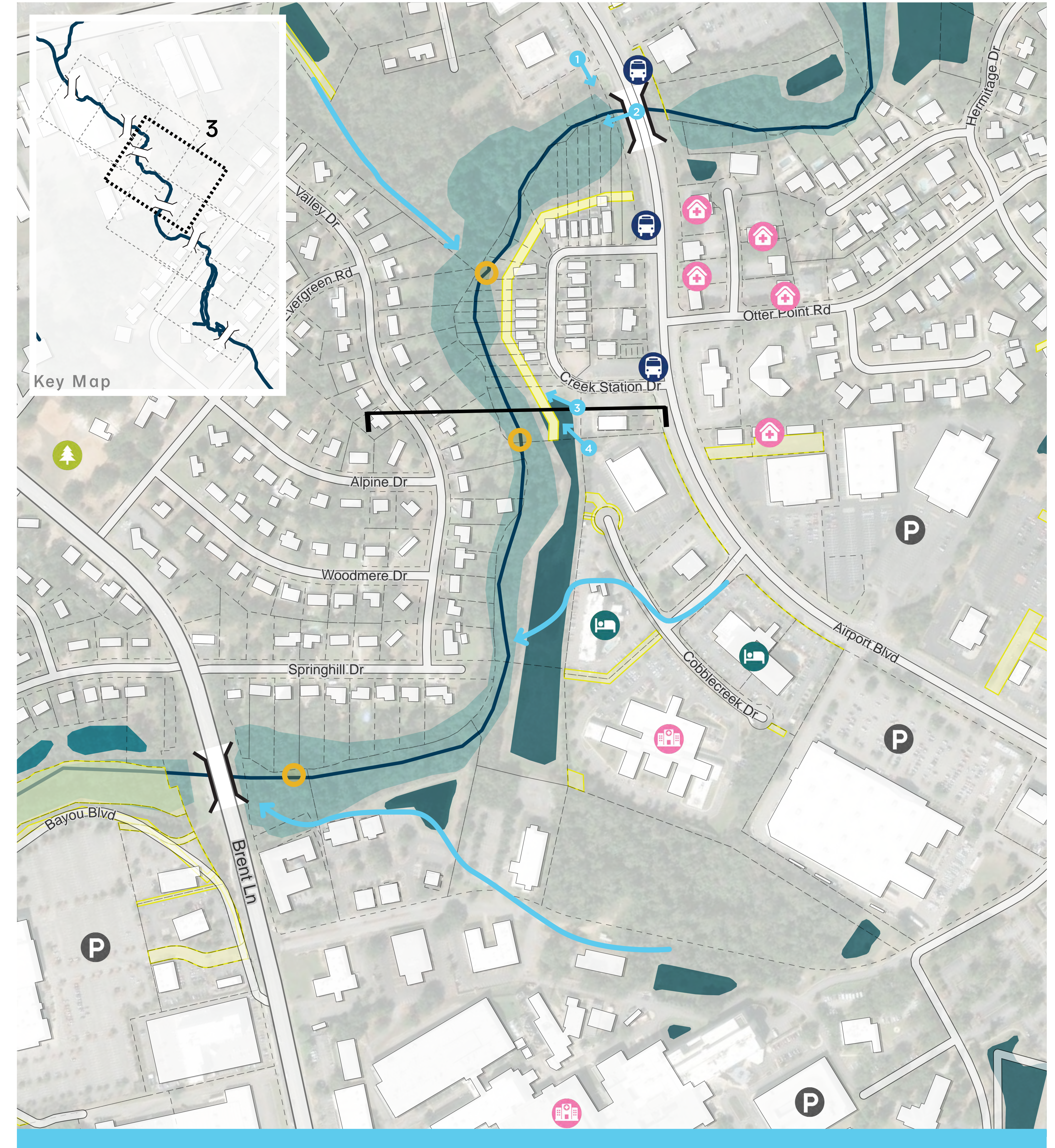
Historic Aerials



Place Packet of Historic Aerials Here!

Airport Boulevard to Bayou Boulevard

Existing Site Conditions



Cross Section



Site Photos



1 Airport Ave Bridge from Outback Steakhouse.



2 Carpenter Creek as seen from the Airport Ave Bridge.

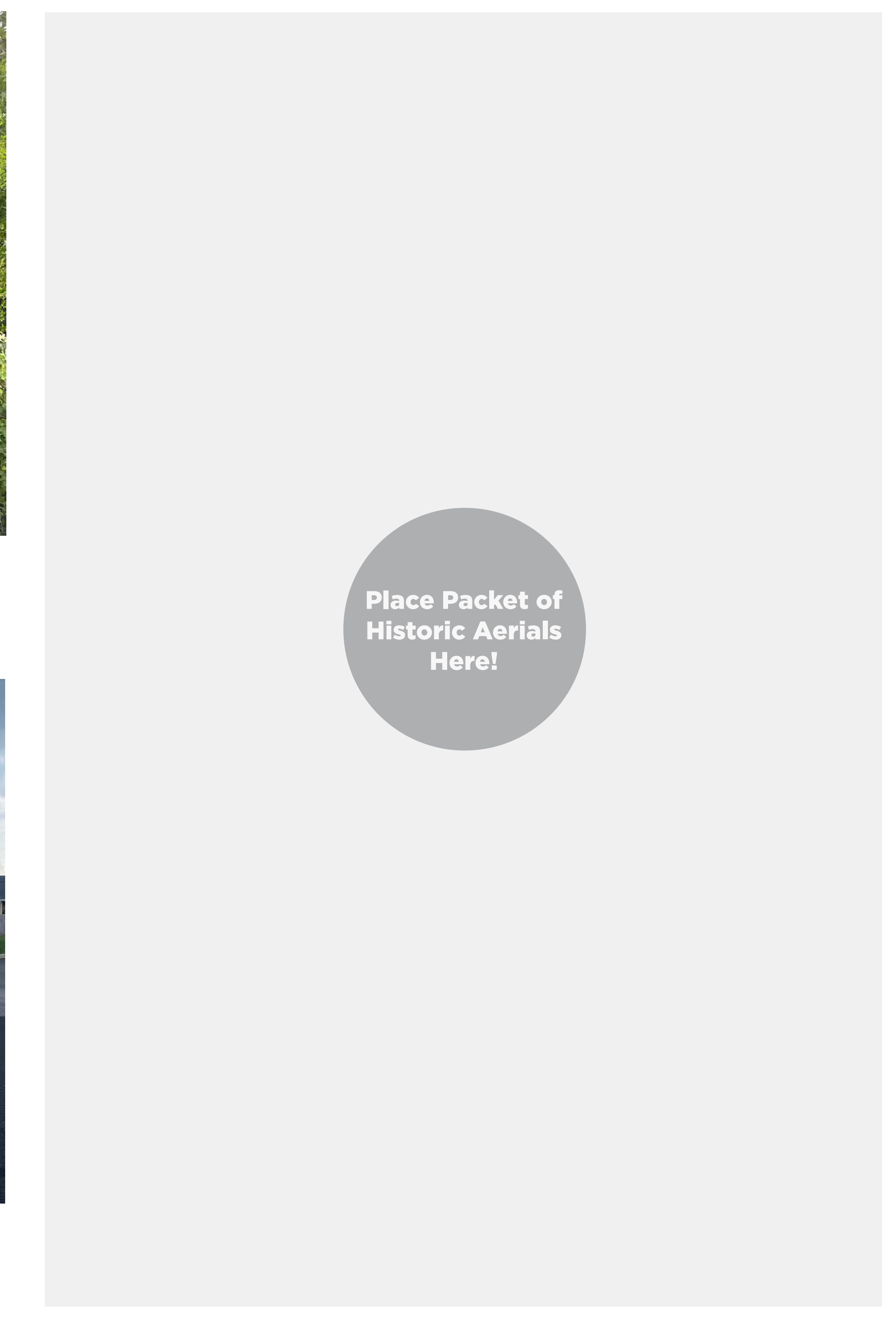


3 The stormwater pond could provide future access to the creek and create additional public recreation space.



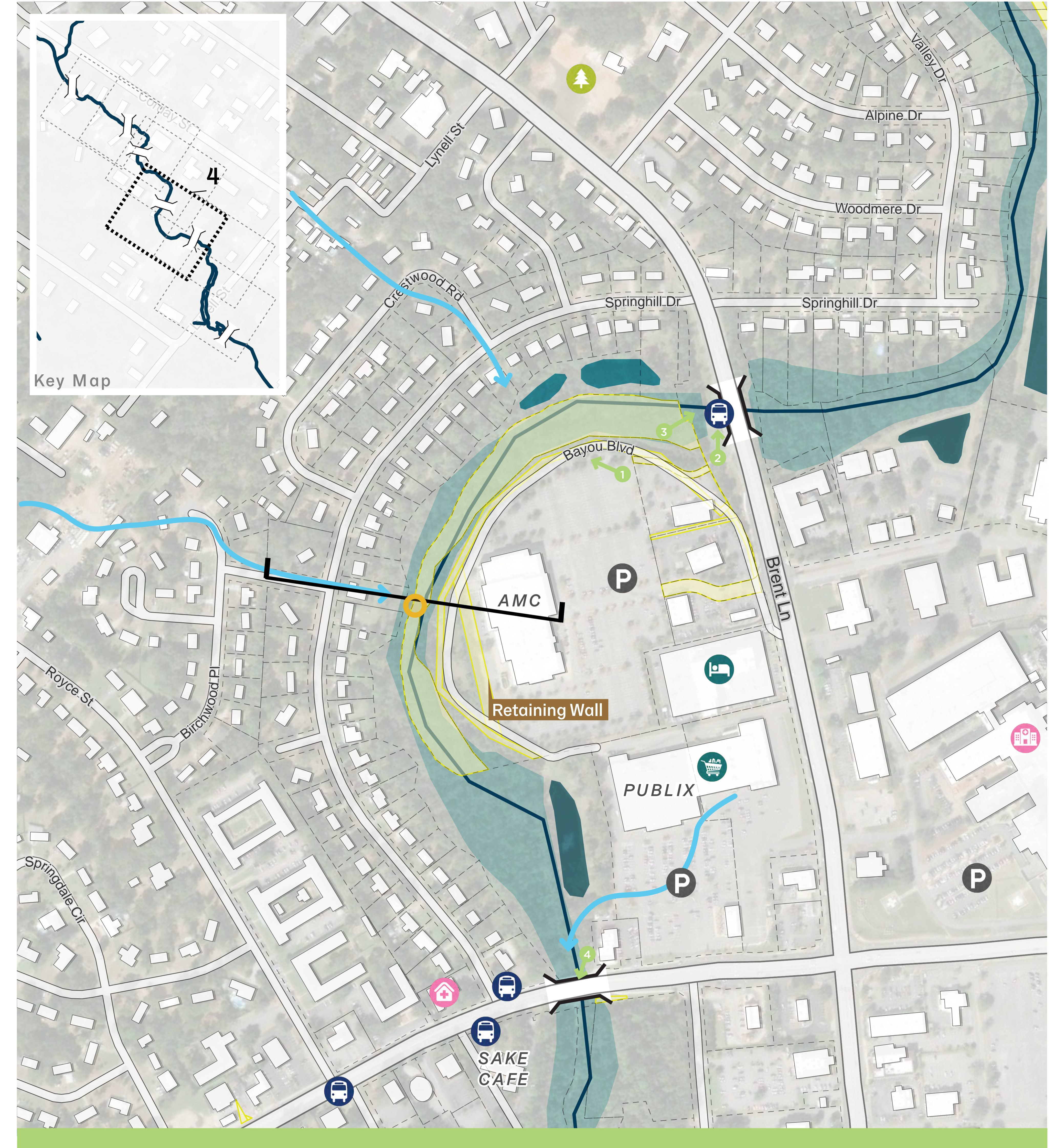
4 Stormwater Pond bordering the creek as seen from Creek Station Drive.

Historic Aerials

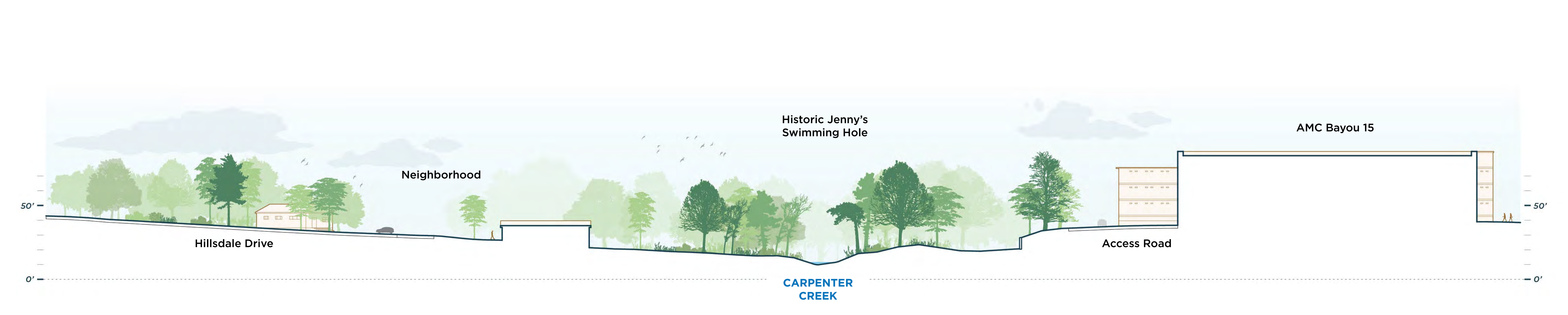


Bayou Boulevard to 9th Avenue

Existing Site Conditions



Cross Section



Site Photos



1 The parking lot as seen from the Mellow Mushroom, creek views are hidden by vegetation, stormwater drains down to creek area.



2 Existing easements near Bayou Blvd can provide future access; informal pathways exist in this area and are used to access creek.



3 Informal pathways provide access to the creek and views of the box culvert under Bayou Blvd.



4 As seen from the N 9th Ave crossing, the creek appears polluted, trash littered along the edges.

Historic Aerials



9th Avenue to Drew Circle

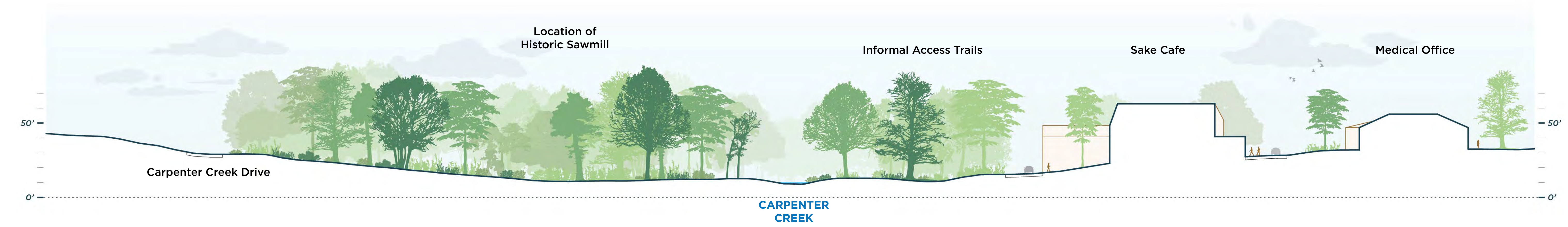
Existing Site Conditions



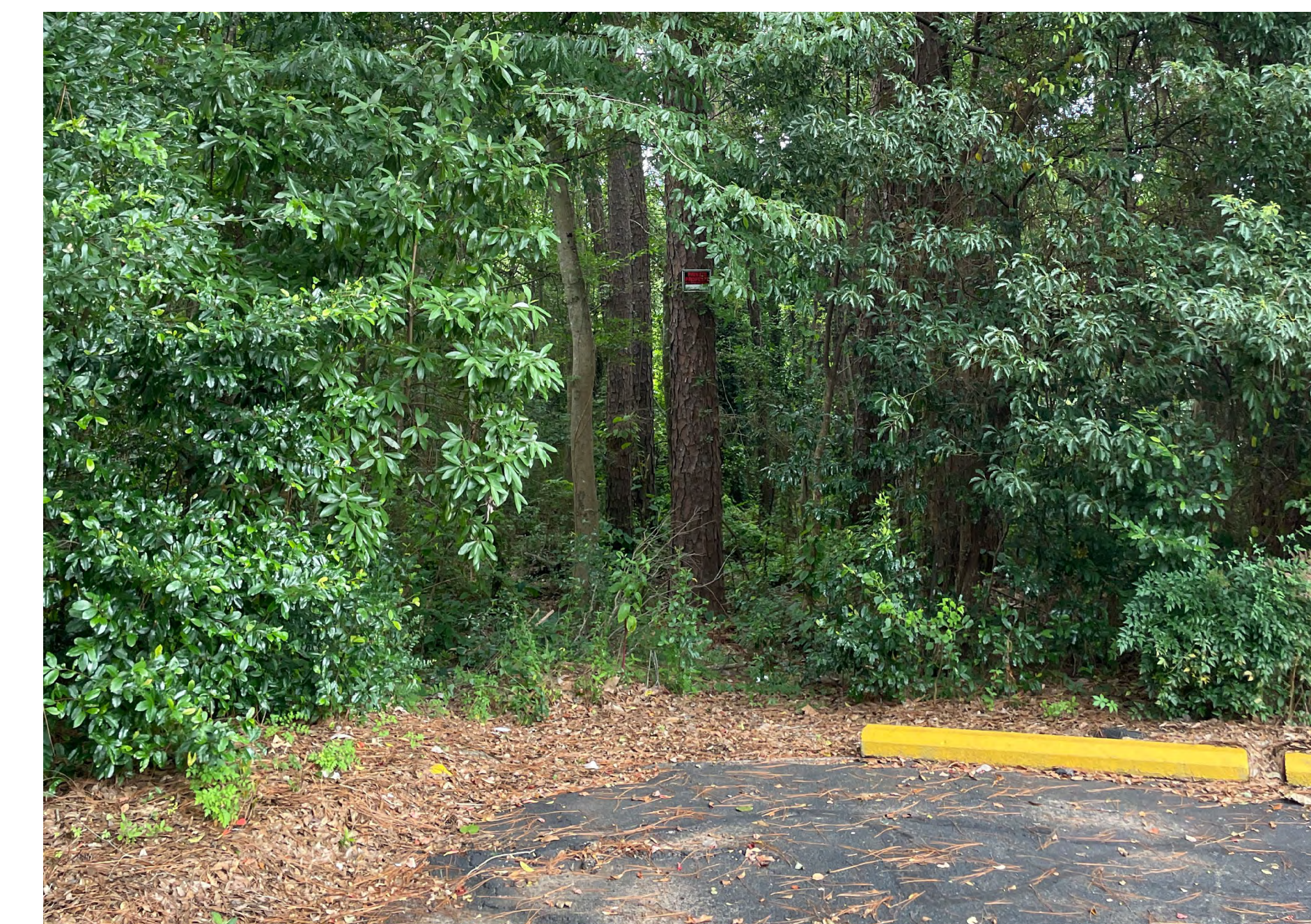
Base Map Legend

- Creek Crossings
- Creek Centerline
- Wetlands
- Stormwater Ponds
- Parcels
- ESCO Easement
- Potential Historic Access Points
- Drainage Paths
- Medical Facility
- Bus Stop
- Parking

Cross Section



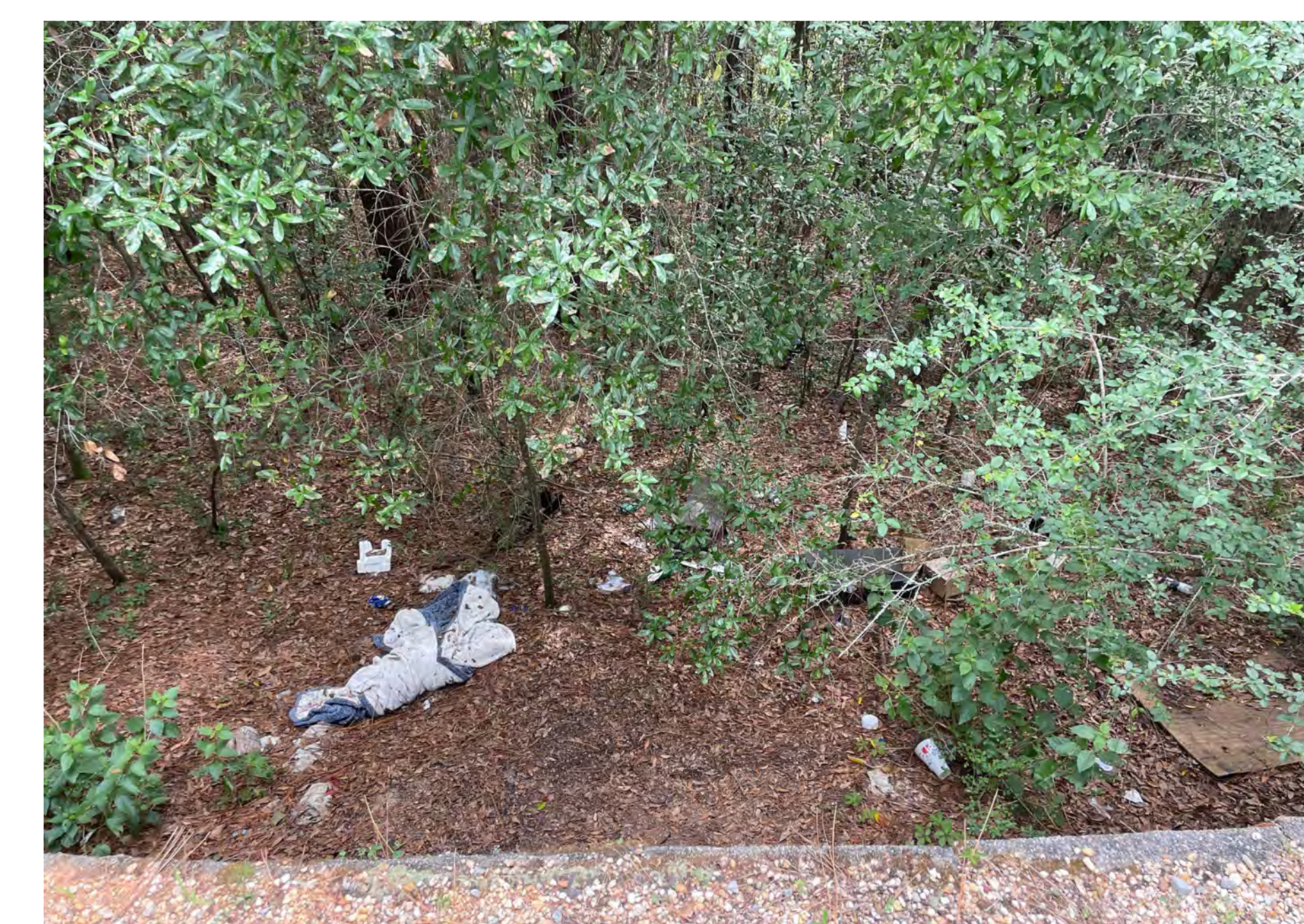
Site Photos



1 Informal access paths lead to the creek from the parking lot behind Sake Café.



2 Behind the Target Box Store, the creek is hidden from view by dense riparian vegetation.

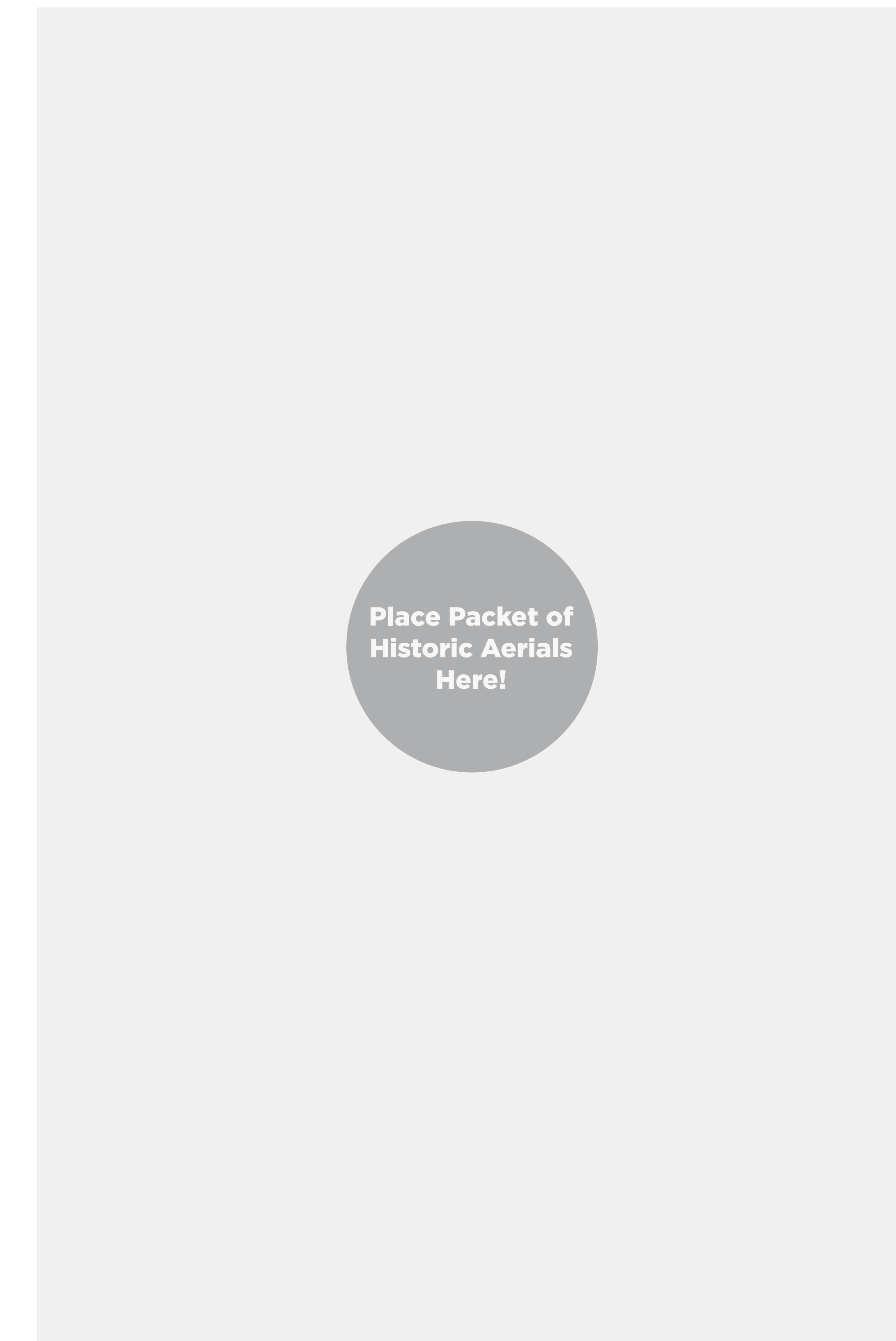


3 Topography significantly drops down toward the creek behind the Target service road; trash and debris can be found in surrounding areas.



4 Behind the medical office Rawson Braxton & Chicola, boardwalks provide creek access on private property from the rear office parking lot.

Historic Aerials



Place Packet of Historic Aerials Here!

Drew Circle to 12th Avenue

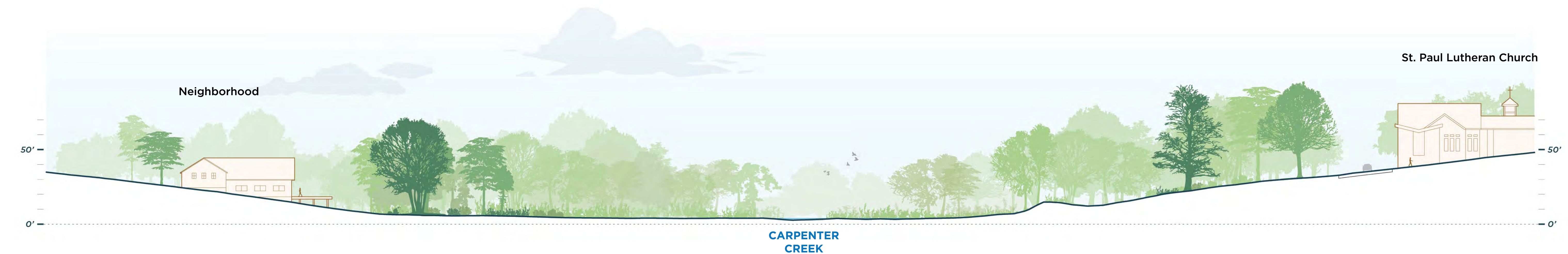
Existing Site Conditions



Base Map Legend

- Creek Crossings
- Creek Centerline
- Wetlands
- Stormwater Ponds
- Parcels
- ESCO Easement
- Potential Historic Access Points
- Drainage Paths
- Medical Facility
- Church
- Bus Stop
- Parking

Cross Section



Site Photos



1 The Stormwater Pond located behind Target has the potential to provide public access and amenities.



2 An open residential lot on Drew Circle located on the west side of the creek has potential to be a public access point.

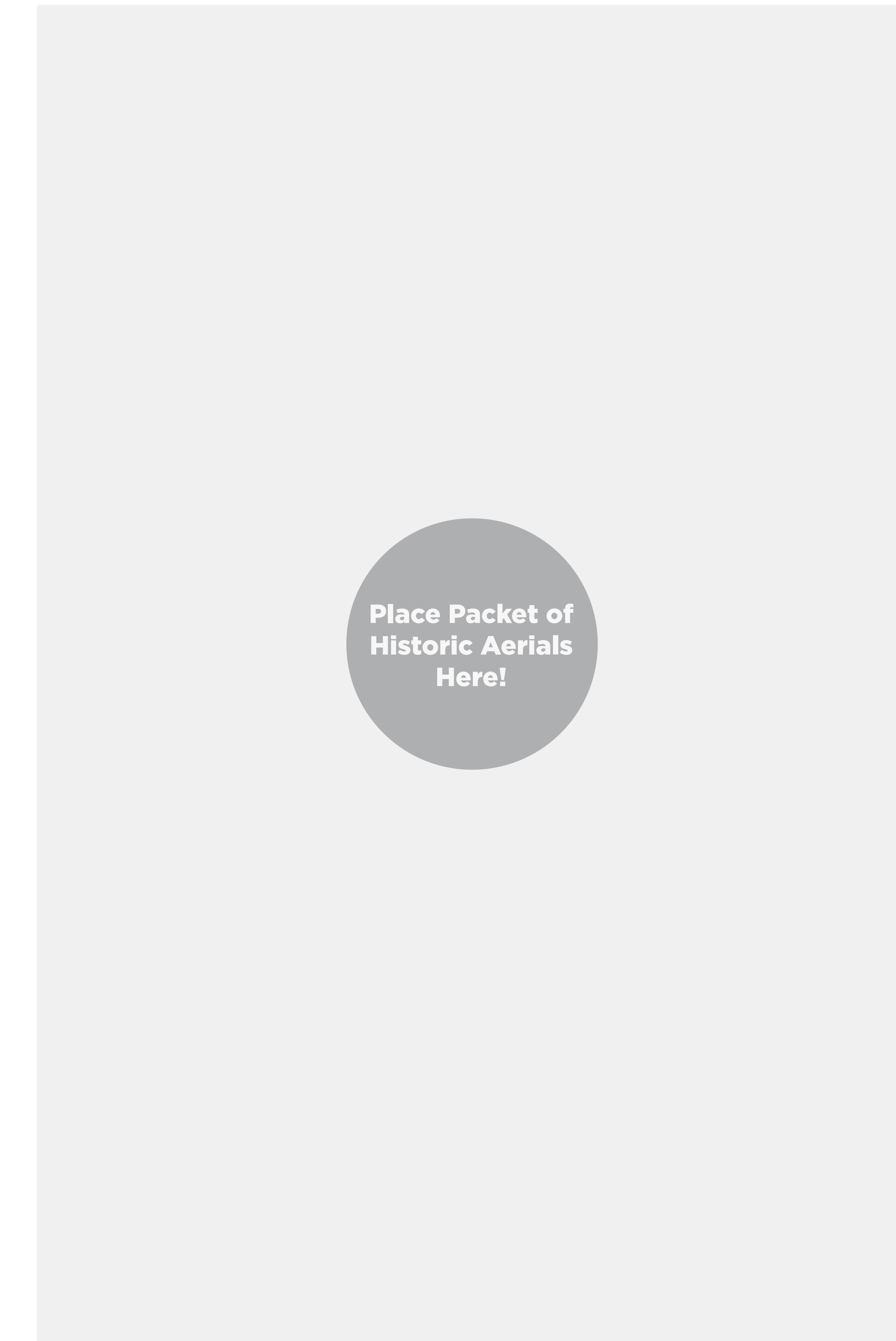


3 The creek as seen from the bridge over 12th Ave.



4 St Paul Lutheran Church located on N 9th Ave is one of many community assets located along the creek.

Historic Aerials



Place Packet of Historic Aerials Here!